

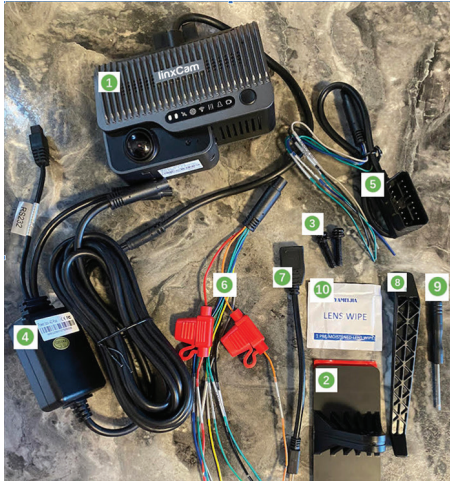
linxCam

Quick Start Guide



Welcome to FleetSharp!

We are excited you chose FleetSharp as your dash camera provider. FleetSharp has helped tens of thousands of businesses like yours keep their vehicles and employees safe for more than fifteen years.



What's Included

1. LinxCam Camera (driver-facing shown)
2. Mounting Bracket with 3M Adhesive Backing
3. Bracket Bolts
4. Power Cable
5. OBD Power Connector
6. Hardwire Power Connector
7. Legacy Programing Adaptor (not used)
8. Tuck stick/Lever
9. 1mm Torx Driver
10. Lens Wipe

Installing the Camera

1 Install the Mounting Bracket

a. The camera must be installed near the centerline of the front windshield and slightly below the rearview mirror. This ensures the driver-facing camera has a full view of the driver from their waist to above their head. If the vehicle does not have a windshield mounted rear-view mirror, mount the camera as high up as possible.

b. Before removing the adhesive backing, place the mount on the windshield and use a small level to ensure that the mounting plate is square to the vehicle and not rotated. Mark the position using electrical or painter's tape. This will provide a guideline for the mount to help ensure it's level and in the optimal position.

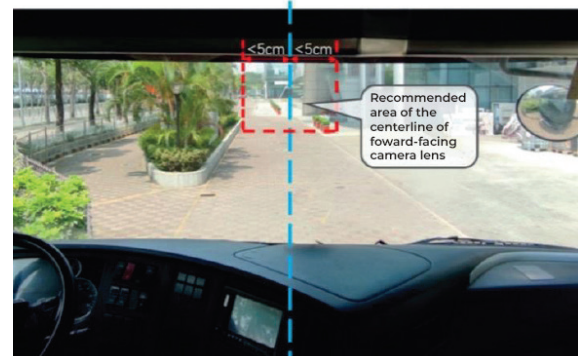
c. Clean the install area of the windshield using the provided Lens Wipe and allow it to dry. Remove the adhesive backing and secure the mount to the windshield with the toothed side facing left. Do not install the mount with the toothed side facing right (upside-down)

2 Install the Camera

a. Connect the camera to the mount with the button and indicator lights facing inward toward the driver and tighten the bracket screw.

b. Swivel the camera to ensure it's aligned vertically. You may need to adjust the forward/backward position of the camera if too much of the vehicle hood is visible.

vehicle centerline



Powering the Camera

1 Hide and Secure Wiring and install the Power Box

- a. Connect the Power Cable to the camera and determine the route the cable will take to the OBDII port or wired power connection point with the vehicle.
- b. Using the Tuck Stick/Lever, route the camera cable above the windshield and down the door jamb. Attach the Power Box using the self-adhesive pad close enough to the OBDII port or wired connection point within the vehicle.
- c. Secure the cables using cable ties and be sure to prevent any slack from hanging into the footwell.
- d. Attach either the OBDII power connector or the wired power connector to the round cable from the power box and then connect to the vehicle.
 - i. For the **OBDII connector**, use a splitter (figure a) to connect the camera power cable (figure b) and the OBDII vehicle tracker. Be sure to tuck/wrap any slack out of the way so as not to interfere with vehicle operation.

figure a:

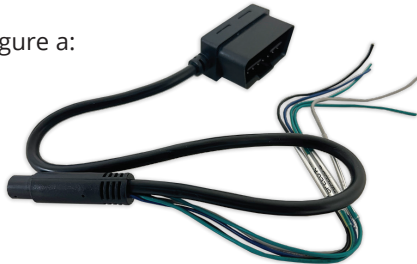
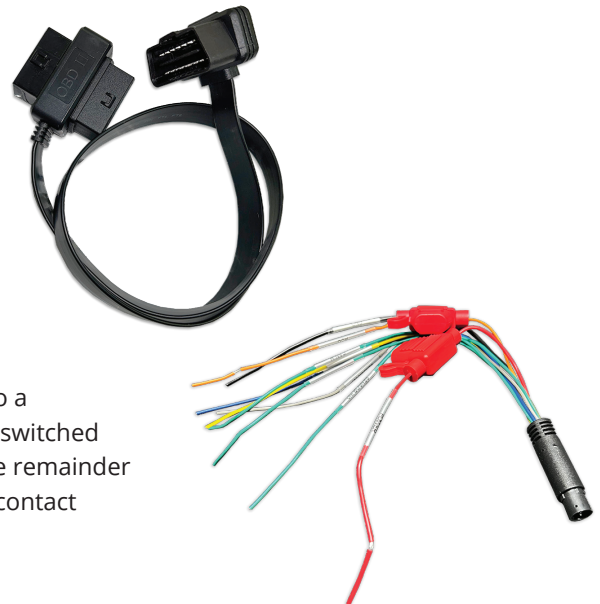


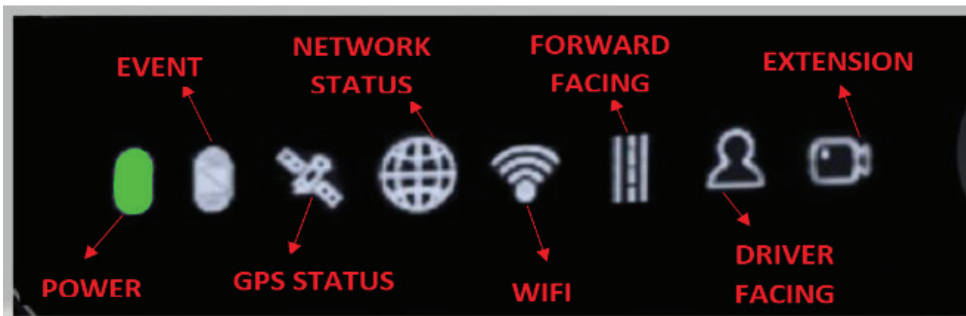
figure b:



- ii. For a **wired power connection**, connect the red wire to a constant power source (not switched), the orange wire to switched ignition, and the black wire to a solid grounding point. The remainder of the wires should be secured to prevent any accidental contact and out of the way of proper vehicle operation.

2 Power On

Upon vehicle Ignition ON, you should see power to both the tracking device and camera. The green "power" light on the left of the camera near the interior lens will illuminate.



Activating and Pairing

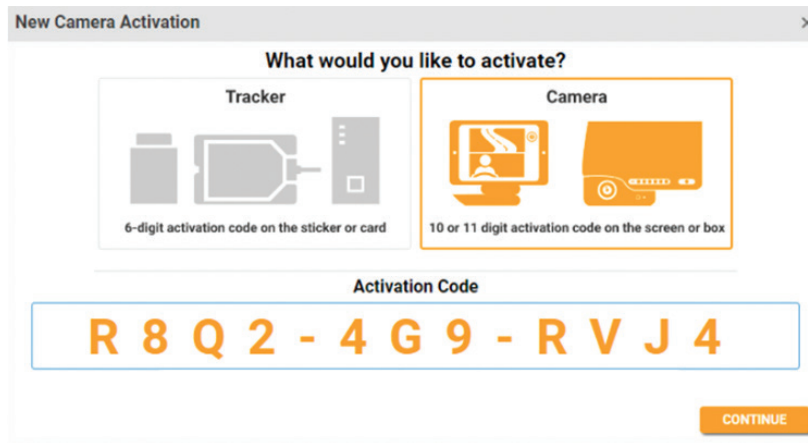
1 If you are also setting up a new GPS tracker

Follow these instructions for the Installation and Activation for the tracker.
[Choose your tracker here](#)

2 If the GPS tracker is already activated

Follow these instructions

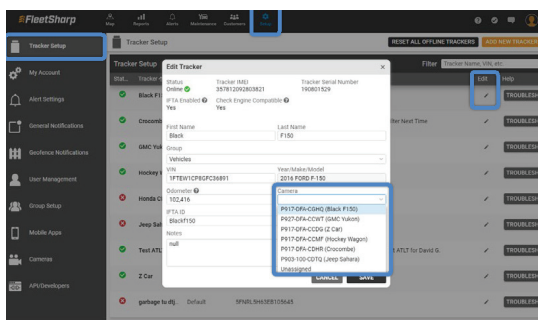
- a. Take note of your camera's serial number. The serial number of your camera is also the activation code. It can be found on the box or on the label at the bottom of the camera.
- b. Log in to your portal.
- c. Click Setup > Add a New Tracker > Select Camera.
- d. Enter the 11-digit serial number from Step (a) and click Continue.



3 Cameras can be paired to a tracker 2 different ways

From tracker setup page

1. Click the edit button (pencil icon) next to the tracker you want to assign a camera to.
2. Click the drop-down under Camera and choose which camera to assign to the tracker.
3. Click Save.



From tracker map page

1. Click on the Tracker to assign the camera to from the left-hand rail.
2. Click the edit button (pencil icon) next to the tracker name.
3. In the popup window, click the drop-down for Assigned Camera and choose which camera to assign to the tracker.
4. Click Save.

