

Dash Cam with GPS Tracker

User Guide



 **FleetSharp**

FleetSharp Dash Camera User Guide

Welcome to your new FleetSharp Dash cam! We are so excited you chose FleetSharp for your video needs and look forward to allowing you to get an in-depth look at the activities happening within the cab of your vehicles and out on the road.

This guide includes: Understanding **Camera-Generated** and **GPS Alert-Generated Videos**

Camera-Generated Videos: OK Presto, Potential Impact, Broken Glass and Movement

GPS Alert-Generated Videos: Pair 20 second video clips to your standard GPS tracker alerts such as speeding, entering or exiting geofences, etc

View Day/Manual Review: Your Linxup Dash Cam records 45 hours continuously (66 hours with the driver-facing camera off) when the ignition is on

Additional Features:

Live View

Snap Shot

Guard Mode

Camera Notifications

1 Camera-Generated AI Alerts

These events are triggered using either the camera's accelerometer or audio detection capability. The following events will automatically generate a 20-second video clip, stored in the cloud and made available via your customer portal's Videos rail. The videos associated with these events are stored for 60 days and will be available to download to your device during that time.

- **Broken Glass (Loud sound of a particular frequency)**
- **Potential Impact**
- **Movement**
- **Voice-Activated Custom Videos (Sound)**

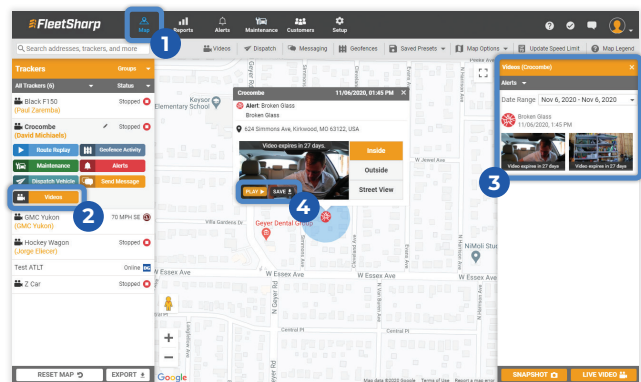
- These are generated by saying **"OK Presto"**. Once "OK Presto" is said, the camera will pull footage from 10 seconds before the command and 10 seconds after to create a custom video clip. You can also say another phrase after OK Presto is initiated to name the video. The name of the video can be changed in the portal as well.

To access these videos:

1. Navigate to the main Map page and select the appropriate tracker.
2. Select "Videos" button.
3. Find video clip in the right-hand rail using Date Range or Alert criteria.
4. A popup box on the map will display the Inside thumbnail, Outside thumbnail, or Street View. Select whether you would like to Play or Save the Inside or Outside view.

Play = Stream the clip from the cloud

Save = Download to your computer



2 GPS Alert-Generated Videos

Our solution ties video clips to every GPS alert generated within your Customer Portal.

You may access GPS-related video for up to 45 hours of drive time if the driver-facing camera is ON and up to 66 hours if the driver-facing camera is OFF.

If you need to save the video for later viewing, click “Add” to save the clip to your Videos Library.

To access these videos:

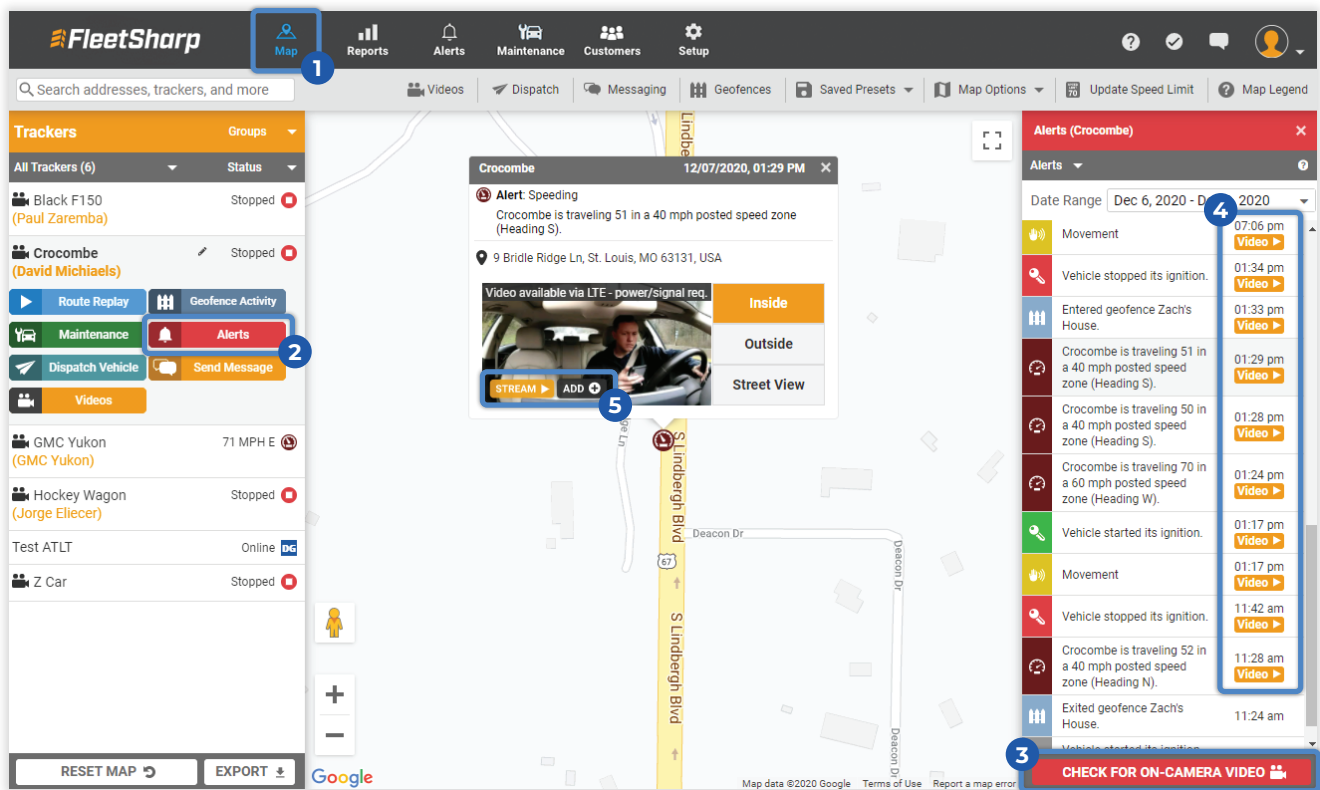
1. Navigate to the main Map page and select the appropriate tracker.
2. Select the “Alerts” button to view all available alerts and filter by Date Range.
3. Click “Check for On-Camera Video” found at the bottom of the Alerts rail.
4. The camera will now load all stored video attached to the GPS alerts occurring within the last 45 hours of drive time.
5. A popup box on the map will display each clip’s Inside thumbnail, Outside thumbnail, or Street View. Select whether you would like to Stream or Add.

Stream = Stream the clip from the camera

Add = Save a clip to your video library, which can be accessed later by clicking the Videos button

Videos saved in your video library are available for 60 days

REMINDER: You must add the clip to your Video Library to save it for later viewing.



3 View Day/Manual Review

Another way to view your Camera-generated or GPS Alert-generated videos is by using "View Day". This feature lets you view your videos on a timeline and more easily find footage between Camera-generated or GPS Alert-generated videos.

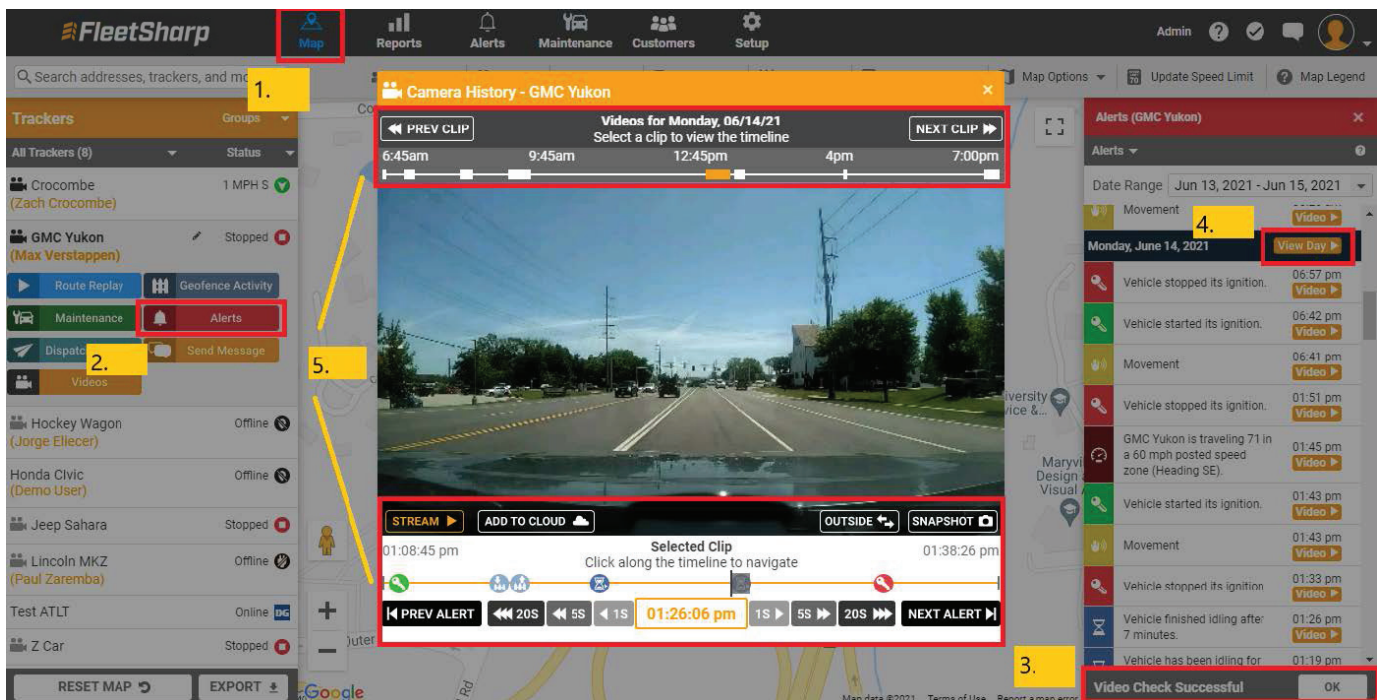
To access View Day:

1. Navigate to your main Map page and select the appropriate tracker.
2. Select "Alerts" button to view all available alerts.
3. Click "Check for On-Camera Video" found at the bottom of the Alerts rail. You'll be prompted once the video check is successful.
4. The camera will now load all stored video attached to the GPS alerts including "View Day".
 - a. The View Day icon can be found next to each date in the Alerts rail
5. Click "View Day" for the day you'd like to view. A popup box will display an upper and lower rail. The upper rail indicates times for which the ignition of the vehicle was on and thus recording video. The lower rail will outline available video clips during the ignition-on time interval. You can toggle between Inside and Outside views.
 - a. Use "Prev Clip" and "Next Clip" on the top rail to step through the selected ignition-on time interval.
 - b. Use the bottom rail to click on particular alert videos and/or select times in between these alerts. You can also step through video footage in 1, 5 or 20 second intervals.

Stream = Stream the clip from the camera

Add to Cloud = Save clip to your video library, which can be accessed by clicking the Videos button. Videos saved in your video library are available for 60 days

Snapshot = Downloads a snapshot of the clip to your device



4 Additional Features

LIVE VIEW:

Live View gives you the ability to stream a minute of real-time video straight from the camera. This is live footage and is NOT stored on the camera or in the cloud.

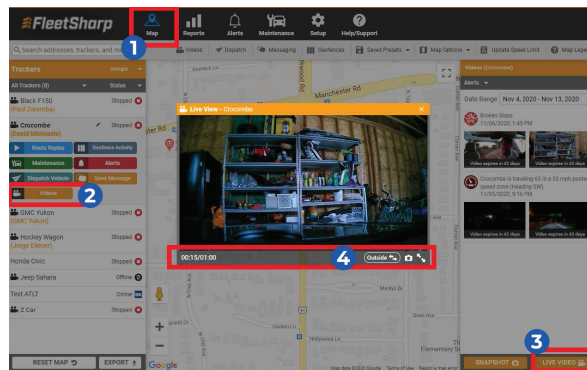
NOTE: In-cab audio is OFF by default. You can enable in-cab audio for your entire fleet of cameras by request.

To access Live View:

1. Navigate to your main Map page and select the appropriate tracker.
2. Select "Videos" button.
3. Select "Live Video".
4. A popup will display the live video and you will see a timer for 1 minute. You can toggle between Inside and Outside view.

Camera Icon = Download a snapshot of the Live Video to your computer

NOTE: Live view is cellular network dependent and requires a strong cellular signal where the camera is located.



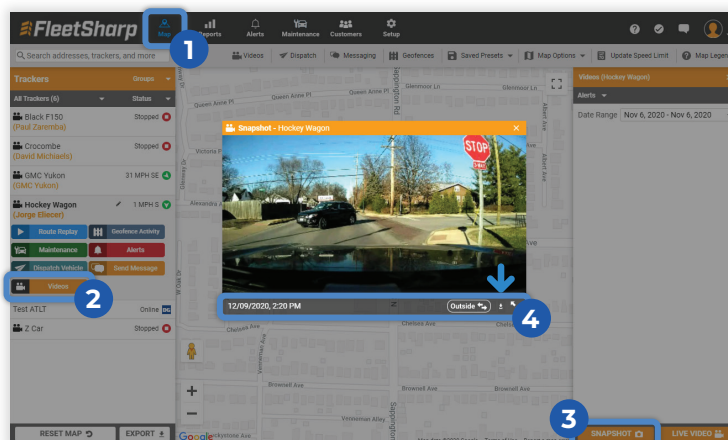
SNAPSHOT:

Snapshot allows you to pull a quick image of the last time the camera connected to the servers.

To access Snapshot:

1. Navigate to your main Map page and select the appropriate tracker.
2. Select "Videos" button.
3. Select "Snapshot".
4. A popup will display the last available image. You can toggle between Inside and Outside view.

File Download Arrow = Download the snapshot to your computer



GUARD MODE:

Guard Mode is included as a feature on your camera and allows for 24/7 protection of your vehicle. The camera captures and records events 24/7, even when the ignition is off. After 5 minutes of the ignition being off, the camera enters Guard Mode and a green light on the back of the camera will blink. Two events trigger the camera to “wake up” from Guard Mode and capture video:

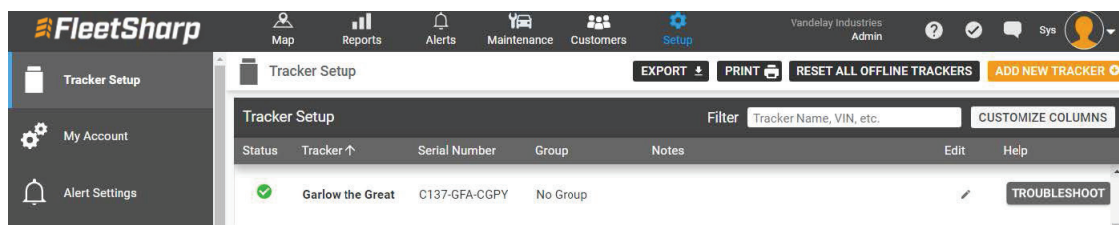
- **Broken Glass Alert:** If a loud noise at or above a certain frequency is detected, a Broken Glass Alert will be generated. The two LED lights on the front of the camera will illuminate the interior of the vehicle and a video will automatically be uploaded to your Videos library.
- **Movement Alert:** If Movement is detected in or around the vehicle, a video is captured and added to your Alerts. You can pair this alert with on-camera video using “Check for On-Camera Video” in your Alerts rail.

CAMERA NOTIFICATIONS:

In addition to a multitude of GPS-generated notifications, our solution offers the ability to set notifications for Camera-specific alerts as well.

To set Camera Notifications:

1. Navigate to Setup.
2. Click General Notifications in the left-hand menu.
3. Click Add Notification.
4. Fill out all Notification details and options:
 - a. Name Notification
 - b. Trackers, Drivers, or Groups to Monitor
 - c. Alert Types: Select the Camera Preset to engage all camera related alerts for your vehicle or select from the Available Alerts list
 - d. Alert Delivery
5. Click Save.

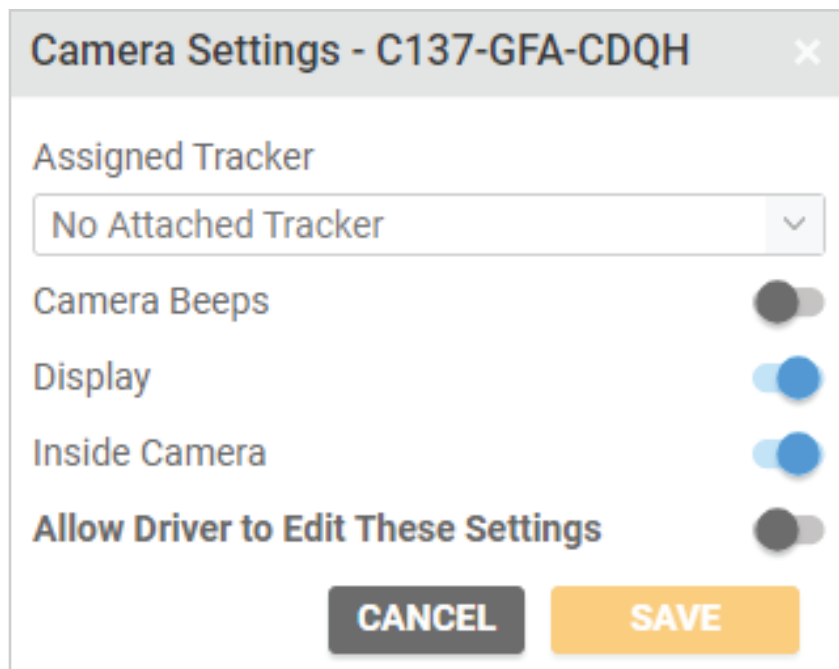


5 Adjusting Camera Settings In The Portal

The settings for your FleetSharp Dashcam can be controlled from “**Setup>Cameras**” and you can also restrict drivers or anyone in the vehicle from modifying those settings on the camera.

To modify a camera’s settings, click the “pencil icon” under “Edit for the Tracker/Camera.”

From here, you can Enable or Disable Camera Beeps, Driver-facing Display and Inside Camera recording. If you want to restrict drivers from changing these settings from the camera, turn OFF that setting.



You can change settings for ALL cameras in your fleet by selecting “Update All Camera Settings.”

